

# ST. PAUL TEACHERS' RETIREMENT FUND ASSOCIATION

## Annual Report

for the fiscal year ended June 30, 2021

St. Paul Teachers' Retirement Fund Association  
2550 University Ave W 312N  
St. Paul, MN 55114-1005

Phone 651-642-2550

Fax 651-642-2553

[www.sptrfa.org](http://www.sptrfa.org)

Jill E. Schurtz

Executive Director / CIO

Christine MacDonald

Deputy Director / CFO

This page is intentionally left blank.

# Table of Contents

## Introduction

Mission Statement .....	4
SPTRFA Board of Trustees and Staff.....	5
Transmittal Letter .....	6
Independent Professional Service Providers .....	8
Organizational Chart .....	9

## Benefits

Pre-Retirement Topics .....	12
Retirement Topics.....	13
Post-Retirement Topics .....	14
Basic Plan Summary of Benefits.....	15
Coordinated Plan Summary of Benefits.....	16
Retirement History Record .....	17

## Investments

Investment Returns .....	20
--------------------------	----

## Actuarial Section

Actuarial Certification Letter.....	22
Summary of Valuation Results .....	24
Accounting Balance Sheet .....	25
Changes in Assets Available for Benefits.....	26
Actuarial Balance Sheet .....	27
UAAL and Supplemental Contribution Rate.....	28
Changes in Unfunded Actuarial Accrued Liability .....	29
Determination of Contribution Sufficiency.....	30
Actuarial Methods & Assumptions.....	31

Appendix – State Auditor’s Report.....	41
--	----

## Mission

**P**rovide our members and their beneficiaries with retirement, survivor, and disability benefits as specified in law and the Association Articles and Bylaws.

**A**ssist our members in planning a secure retirement by providing friendly, high quality, consumer oriented service, pre-retirement education and information in a professional and cost effective manner.

**I**nvest the assets of the fund to provide the optimum return while preserving principal by controlling portfolio risk.

## SPTRFA Board of Trustees

Mike McCollor	President
Lori Borgeson	Vice President
W. Matt Bogenschultz	Secretary
Michael McKay	Treasurer
Zuki Ellis	Ex-Officio Trustee
Thomas Koreltz	Trustee
Xong Moua	Trustee
Karen A. Odegard	Trustee
Stephanie Pignato	Trustee
Margaret Schiller	Trustee

## SPTRFA Staff

Jill E Schurtz	Executive Director / CIO
Christine MacDonald	Deputy Director / CFO
Nancy Langer	Member Services and Outreach
Rachel Pastick	Communications and Member Services
Janet Williams	Operations and Member Services
Tamera Zielinski	Administrative Assistant

# St. Paul Teachers' Retirement Fund Association

---

## TRUSTEES & OFFICERS

Zuki Ellis  
Thomas Koreltz  
Xong Moua

Karen Odegard  
Stephanie Pignato  
Maggi Schiller

Mike McCollor ..... President  
Lori Borgeson..... Vice President  
W. Matthew Bogenschultz.... Secretary  
Mike McKay ..... Treasurer  
Jill E. Schurtz ..... Executive Director

2550 University Ave W STE 312N  
Saint Paul, MN 55114  
Phone (651) 642-2550  
Fax (651) 642-2553  
Online: [www.sptrfa.org](http://www.sptrfa.org)

---

## Letter of Transmittal

---

Members of the Association:

The trustees and staff of the St. Paul Teachers' Retirement Fund Association (SPTRFA) present the Annual Financial Report for the fiscal year ended June 30, 2021, in accordance with the provisions of Minnesota Statutes § 356.20.

This report is intended to provide readers with sufficient information to make informed assessments about the organization's financial condition, fiscal activities, actuarial status, investment performance, and compliance with laws, regulations, bylaws and policies.

This is the complete Annual Report of the Association. This report is also available on the Fund's website at, [www.sptrfa.org](http://www.sptrfa.org), or by request from the SPTRFA office.

Major sections included in this report and their content are as follows:

- **Introduction**

Mission Statement, Board of Trustees, professional service relationships, and organizational structure.

- **Benefits**

Summary information regarding Plan benefit options, calculation methods, and a history of annual retirements.

- **Investments**

Fund investment returns and Fund investment advisors under contract with the Association.

- **Actuarial Valuation**

Actuary's Certification Letter and various actuarial valuation sections that assess the Plan's long-term funded status and adequacy of revenues and describe relevant actuarial methods and assumptions.

- **Appendix A – State Auditor's Report**

The Office of the State Auditor (OSA) audits the financial statements of the SPTRFA. However, their report for the most recent fiscal year was still pending completion at the time this report went to print. This report will be made publicly available on the website of the Minnesota Office of the State Auditor, <https://www.osa.state.mn.us>.

The SPTRFA Board and staff are responsible for the safekeeping of the Association's assets, the prudent investment of those assets, and for ensuring that benefits are calculated properly and paid timely. Administrative costs are budgeted at a level sufficient to service the needs of our members. We strive to be service providers of the first order and our administrative costs remain extremely efficient.

The Board and staff of the SPTRFA serve as fiduciaries on behalf of our members and their survivors and beneficiaries. We manage the assets entrusted to our care in concert with the Prudent Person Standard in Minn. Stat. § 356A.04, subd. 2, and as specified under Minn. Stat. § 356A.06, subd. 7.

With over 112 years of service to our members, the SPTRFA Board and staff remain committed to administering the affairs of the Association with the highest degree of diligence and efficiency.

Respectfully submitted,



J  
Executive Director / CIO



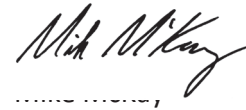
President



LOTT BORGESON  
Vice President



Secretary



Treasurer

# Independent Professional Service Providers As of June 30, 2021

## **Actuary**

Gabriel Roeder Smith & Company

## **Auditor**

Minnesota Office of the State Auditor

## **Investment Managers**

Barrow, Hanley, Mewhinney & Strauss, LLC  
BlackRock Institutional Trust Co.  
Brandywine Global Investment Management, LLC  
Dimensional Fund Advisors, LP  
Dune Real Estate Partners  
EnTrust Global  
Franklin Park  
Guggenheim Partners Investment Management, LLC  
JPMorgan Investment Management, Inc.  
Mellon Investments Corp  
Morgan Stanley Investment Management, Inc.  
North Sky Capital  
Parametric Portfolio Associates, LLC  
Securian Asset Management, Inc.  
Minnesota State Board of Investment  
TCW Asset Management Co.  
UBS Realty Investors, LLC  
Venture Investment Associates  
Wellington Management Company, LLP

## **Investment Custodian**

U.S. Bank

## **Investment Performance Consultant**

Asset Consulting Group

## **IT Services**

Sagitec  
Corporate Technologies

## **Legal Counsel**

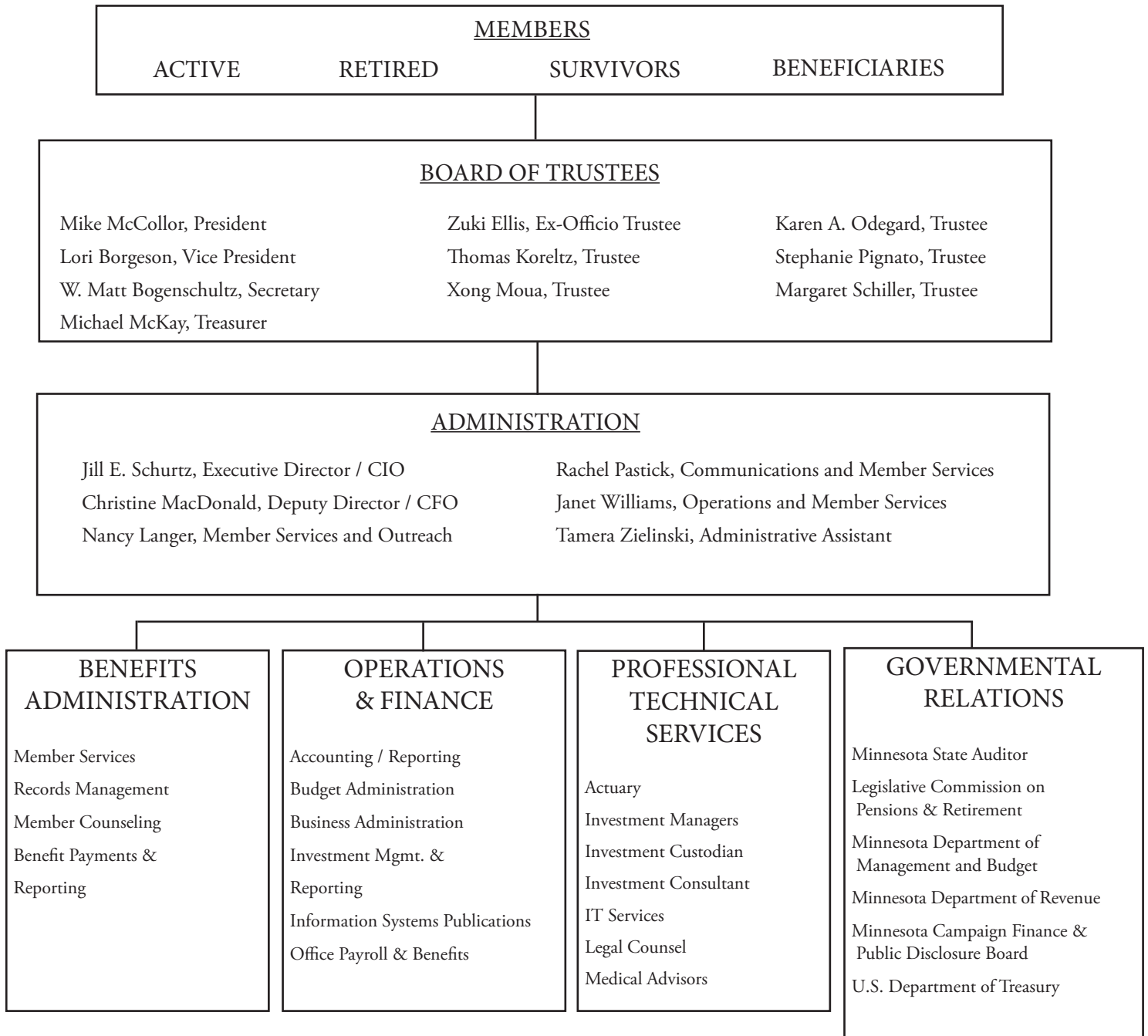
Fox Rothschild, LLC  
Rice, Michels & Walther, LLP

## **Medical Advisors**

Dr. Ronald Vessey M.D.  
Dr. David Johnson M.D.



# Organizational Chart



This page is intentionally left blank.